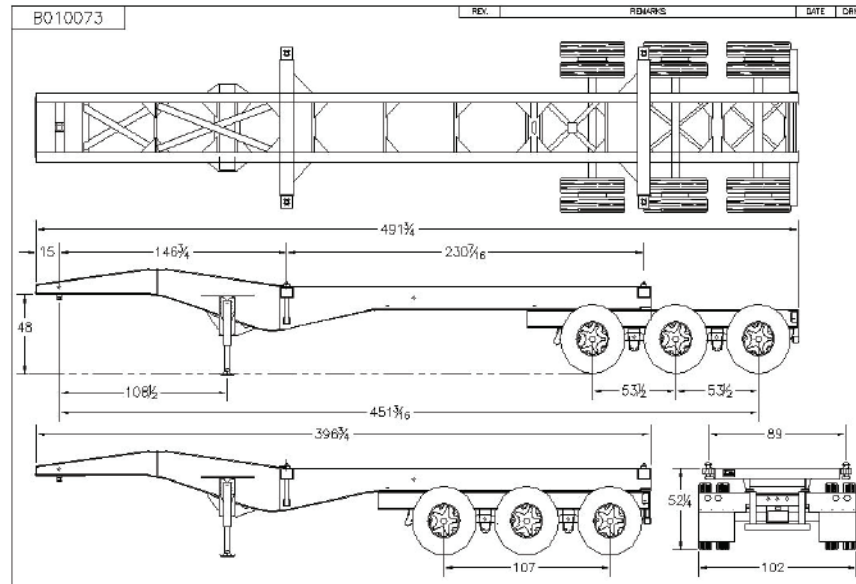


## TECHNICAL BULLETIN 20'-33' Extendable Bridgmaster Container Chassis

### Characteristics

Carries one 20 ft ISO Container rated for 24 metric tonne when using a 16,200lb tractor. Meets all DOT, TOFC, AAR, FMVSS, ANSI, SAE and TTMA specifications in effect at the time of chassis manufacture and applicable to operation in the United States.



### ● DIMENSIONS

**Overall Chassis Length:** (Extended) 41ft (Closed) 33 ft  
**Overall Chassis Width:** 96 inches over bolsters (102 over tires)  
**Triaxle Location:** 79 inches to center axle  
**Kingpin Location:** 15 inches from front of chassis  
**Slide Range:** 96 inches  
**Maximum Rear Height:** 52 1/2 in.  
**Main Beams:** Fabricated I-Beam  
**Bogie Beams:** W10 x 30 lbs/ft wide flange I-Beam

**Suspension:** Type: Spring-Ride  
**Axle Centers:** 53 1/2 inch  
**Springs:** Two Leaf  
**Hub Type:** 5 spoke  
**Hub Material:** Steel  
**Hub Manufacturer:** KIC  
**Drum:** Inboard mounted (5 spoke)  
**Rim/Wheels:** 7 1/2 X 20 tube type  
**Wheel/Rim Color:** White

