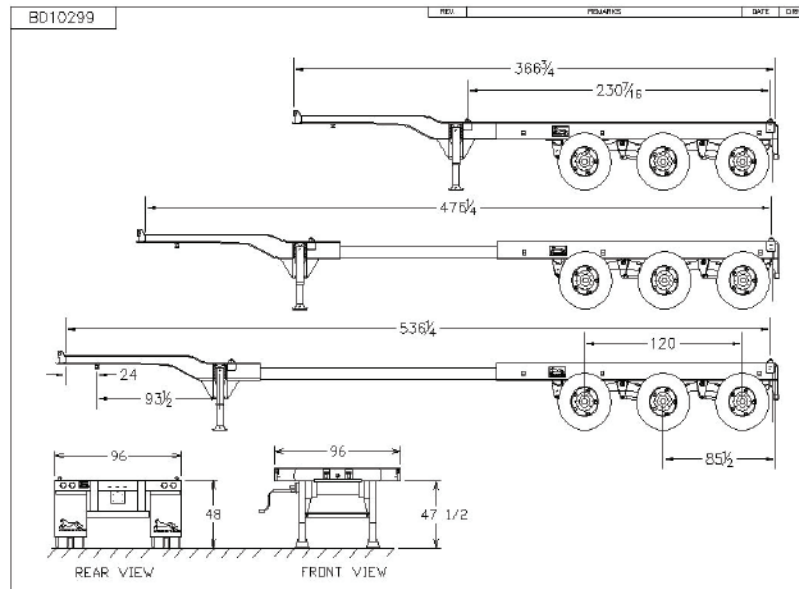


## TECHNICAL BULLETIN 20'-40'-45' Gooseneck Triaxle Container Chassis

### Characteristics

Carries one 20 ft (50,000 lb max) or one 40 ft or one 45 ISO Container Meets all DOT, TOFC, AAR, FMVSS, ANSI, SAE and TTMA specifications in effect at the time of manufacture and applicable to operation in the United States.



### ● DIMENSIONS

Overall Chassis Length: 20 ft, 40 ft, , 45 ft  
 Overall Chassis Width: 96 inches  
 Tri-axle Location: 85 1/2 inch  
 Kingpin Location: 24 inches from rear face of front bolster  
 Maximum Rear Height: 48 inches  
 Main Frame Width: 40 inches  
 Main Beams: Wide flange I-Beam 12 inch deep  
 Gooseneck Beams: 5 inches deep I-Beam  
 Upper Coupler Assembly: Pick up plate is 5/16" thick

**Suspension:** Evely Spring-Ride  
**Axle Quantity:** Three Axles  
**Suspension Type:** Spring-Ride  
**Axle Centers:** 60 inch  
**Springs:** Three Leaf  
**Hub Type:** Hub piloted for disc wheels  
**Hub Material:** Steel  
**Hub Manufacturer:** Hayes/Lemmerz  
**Drum:** Outboard mounted

